

## SETUP GUIDE

### Interface



1 ON/OFF/Stand by

2 Volume +

3 Volume -

4 Microphone

5 USB type C

6 3.5mm Jack

7 Memory card port

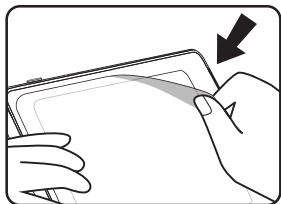
8 Backside camera

### IMPORTANT INFORMATION PLEASE READ BEFORE SETTING UP YOUR KURIO

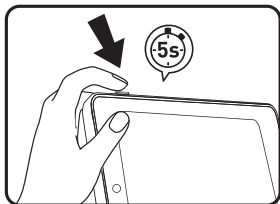
- The tablet must be set up by an adult to ensure an appropriate level of protection for all users of the device.
- To turn off your KURIO tablet correctly, press the power button until the pop up message appears on screen, and then select "Power off". Avoid switching off the device by pressing and holding the power button until the unit stops.
- Password reset: Tech support may not be able to retrieve your parental area password, so please don't forget to note it in a safe place. In case of a lost password, the tablet may have to be factory reset and all personal data will be lost.
- Please connect your KURIO tablet to wifi frequently to receive and enjoy the latest upgrades. Updates are pushed to your tablet wirelessly.
- If you encounter any issue with your device, please do not return it to the store. Please review our FAQs & troubleshooting info or contact our tech support team for help at [www.kurioworld.com](http://www.kurioworld.com)
- Please note that part of the memory is used for internal system and for pre-installed applications.

Find more tips and information on [www.kurioworld.com](http://www.kurioworld.com)

# Installation & Update



Remove the screen's protective film Before using your KURIO Tablet for the first time.



Press the power button for 5 seconds to turn the tablet on.

## KURIO Setup

Set up all the following elements to make your child's experience safer with the browser.

- **Parent setup:** Enter an email address and check the Terms and Conditions.
- **Password:** To protect your parental account, you must set up a password.

## Set up your child profile

- Choose a name or a nickname for your child.
- Set up the birthdate and gender.

Then press "CONFIRM" to complete the installation.

Touch the "Child Mode Activation" to lock your tablet in the child mode and access the KURIO Genius settings.



### Parental Security

Make your child's experience safer with our Kurio Genius! Enter an email address and a password to setup your Kurio Genius account. Once the setup is complete, you can handle your child's browsing.

E-mail

PassWord

Confirm PassWord

### Child Profile

Setup your child's profile, choose a name or a nickname that will appear on the tablet. Then, setup the birthdate and gender. The birthdate will define by default the child access to applications and websites.

Child's first Name

Date of Birth

28/06/2018

Gender



Girl



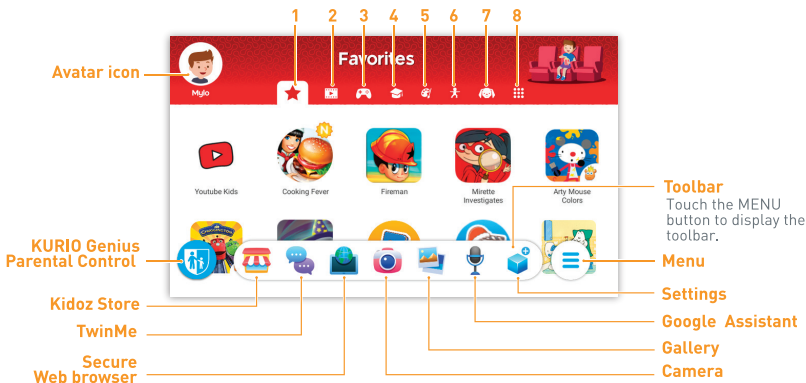
Boy

If you click to Finish you accept our [Terms and Condition](#)


Finish >

# Child Interface

- 1. Favorites:** to add apps into the Favorites section, keep your finger pressed on the selected app, and select "add to favorites".
- 2. Medias:** access media section apps.
- 3. Games:** access all games.
- 4. Education:** access all educational apps.
- 5. Creative:** access all creative apps.
- 6. Sports:** access all apps to keep you fit and active.
- 7. Lil' Kurios®:** access all entertaining Lil Kurios® nursery rhymes videos.
- 8. Apps:** access all authorized apps.



# KURIO GENIUS Overview

Touch the PARENTAL CONTROL icon  twice to access the Kurio Genius parental control dashboard. You will be requested to enter your password to access the dashboard.

## Main menu

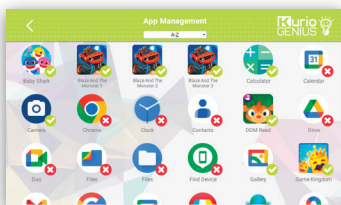
On the main screen, touch each title to enter the corresponding section and set the parameters.

- Child profile's information:** You can modify your child profile's name, birthday and gender at the top of the screen.
- Application Management:** To allow or block each application installed on the tablet.
- Time Control:** To configure hours of use per day and play time.
- Web Access:** To allow, block or manage Internet access, use web filtering or web list.
- Blue Light filter:** is OFF by default. Switch it on to filter the amount of blue light displayed on the screen and reduce the digital eyestrain, so eyes won't feel so tired by the end of the day.
- Ear protection:** This mode is intended to avoid the volume being increased to a level that could cause harm to a child's hearing when using a headphone.



## App Management

- **Authorize new apps auto:** Turn this option on if you want each app your child downloads to be automatically accessible without your prior review/ authorization.
- **Display suggested app:** this option is ON by default. It would display a list of curated apps in the child's profile. Turning OFF would remove all suggested apps that are not yet downloaded and installed from the Child's profile. To display them back, activate this option again.
- **Google Assistant** is ON by default. You can turn it off at any time.
- By pressing any app, you can set the authorized time of the used app and specify if you would like to authorize it during homework or not.



## Time Control

Thanks to the Time Control menu, you can setup different time parameters to control your child's use of their apps. You may limit the access to their apps at specific times of the day and for a specific duration.

- **Hours of use:** Time slot of possible use per day. Choose the time slot by dragging the cursors to define the hours within which the child will be able to access the apps.
- **Play time:** Maximum duration of use per day.
- **Homework:** the tablet can be blocked during homework time. Parents can also select which applications are authorized or not during this time slot in the application management menu.



Finally, press on the  tab to apply these settings for the whole week or for specific days.

## Web Access

Our advanced filtering system allows children to access thousands of websites safely, by blocking websites that may contain inappropriate content.

- Turn off web access from the KURIO GENIUS main menu to block all access to the web.
- Turn on the web filtering to use predefined filters of websites according to the age of your child. (Press the web access title to access more options).
- Turn on the web list to use your personalized list of websites. (Press the web access title to access more options).




## Web Access menu:

- **Web filtering:** Use the automatic web filtering list adjusted to your child's age by default or turn on custom parameters on the bottom right hand corner of the screen to disable or activate the filter on specific categories of your choice. You can press "Set to current age" at any time to reset the list to default.
- **Web list:** Create and manage a list of websites by adding URL to allow or to block. The green tick shows the web site is authorized while the red cross means the web site is blocked.



## Family Sharing:

### It's possible to share the tablet between parents and child.

When the tablet is locked in Child profile mode, from the settings menu , clicking on the "Disable child mode" icon will exit the Child profile and unlock all parental controls and other limitations on the tablet. This action is password protected. This way, parents can use the full functionality of their Android tablet.

To reactivate the profile again, please click on the icon "Child mode activate" on the home screen.



## Using the memory card reader

The memory card can be used in 2 ways:


- **Portable storage:** a memory card is used for files transfer such as videos, music and photos from one device to another. You may remove the card from the tablet if needed.
- **Internal storage:** if you choose this option, your memory card will become additional internal storage for the tablet. So you can install apps to it and save app data to it.

**Caution:** If you use a memory card as internal storage, the Android system will format it in a way it won't be recognized by other devices. The memory card shall not be removed from the device. In case you remove the memory card, the device may not work properly. To fix it, please insert the existing memory card. When choosing the option "use as internal storage", the system will ask you if you want to move data to new storage. Please choose "move later". For more details about using the memory card as internal storage, please check our FAQ on the website.

## Tips and Recommendations

- While using some applications that use a lot of the device's processing capacity, the device may become warm. If this occurs, take a short break from using the device to let it cool down.
- Keep the unit clean by wiping it with a slightly damp cloth.
- The Kurio® bumper protects your tablet in most cases, but is only intended to make the product more resistant to damage due to falls, bumps or other impact damages. Like any other electronic device, Kurio® is fragile and despite the presence of the protective bumper, can break or be damaged from forces like dropping, banging, or being hit by other things. Please handle with care.
- Broken screens and touch panels are not covered by the warranty, and no bumper can prevent all damage.
- Do not damage or deform the power supply USB cord. If it is damaged or deformed, it may cause electric shock or malfunction when used. When removing from wall outlet, be sure to remove by holding the plug attachment and not by pulling the cord. The power adapter & cord should be plugged in near the unit, so it is easily accessible and does not strain the cord.

## Warning

- All packing materials such as internal bags, plastic collars, plastic films, screen protector film, and carton inserts are not part of this product and should be removed before handing the device over to a child. Please keep the box and this guide for further reference.
- Do not try to disassemble the unit.
- Keep the unit out of direct sunlight and away from any direct heat source.
- Do not expose the unit to moisture or water.
- If a small part is coming out of the KURIO, don't try to remove it. Keep it away from small children.
- Never force a connector into a port of KURIO. If a connector and a port do not join with reasonable force, make sure that the connector matches the port and that you have positioned the connector correctly in relation to the port.
- To clean up the screen, simply use a soft damp cloth. Do not use alcohol, solvent, aerosol spray or abrasive cleaners to clean your KURIO.
- The silicone bumper is designed to protect from light use and drops but is not guaranteed to protect this delicate piece of electronics from severe drops, abuse, misuse, etc.
- The product and USB type C cable should be periodically examined to check that they are in good condition.
- In case of defect, the USB type C cable should not be repaired but replaced.
- Memory card: You can also share data using a memory card sold separately. To insert a memory card, pull the cover of the memory card from the bottom side of your tablet. Make sure to move the files to and from the appropriate folders so that they can appear properly on your tablet. We recommend that you transfer your photos and videos regularly.
- In case of data transfer from your Tablet to PC or MAC, to avoid data corruption or lost data, follow the instructions in this manual. The user is responsible for any damage or loss of data, the misuse, malfunction or modification.
- If for any reason, the screen (display) is cracked or broken, immediately stop using the product.
- Do not drop the product or subject it to severe impact.
- Do not use and do not expose the device in extreme temperatures (hot or cold), dusty conditions or damp conditions. Do not expose to direct sunlight. Do not expose the device to water, Liquids, rain, dust, or moisture. If your tablet is exposed to liquid, power off the device immediately and clean/dry it.
- Avoid using the device near strong magnetic fields. If your tablet has been exposed to magnetic fields, please restart the device, following the instructions in this manual, if necessary.
- Please keep the box and this manual for further reference. This manual may not reflect your actual device's operation. All information is subject to change without prior modification. Please follow your actual device's operational procedures.
- Disposal of a battery into fire or a hot oven, or mechanically crushing or cutting of a battery, that can result in an explosion; Leaving a battery in an extremely high temperature surrounding environment that can result in an explosion or the leakage of flammable liquid or gas;  
A battery subjected to extremely low air pressure that may result in an explosion or the leakage of flammable liquid or gas.
-  The symbol indicates DC voltage.

## RF exposure information (SAR)

This device meets the government's requirements for exposure to radio waves. This device is designed and manufactured not to exceed the emission limits for exposure to radio frequency (RF) energy set by the Federal Communications Commission of the U.S. Government. The exposure standard for wireless devices employs a unit of measurement known as the Specific Absorption Rate, or SAR. The SAR limit set by the FCC is 1.6 W/kg. Tests for SAR are conducted using standard operating positions accepted by the FCC with the device transmitting at its highest certified power level in all tested frequency bands. Although the SAR is determined at the highest certified power level, the actual SAR level of the device while operating can be well below the maximum value. This is because the device is designed to operate at multiple power levels so as to use only the power required to reach the network. In general, the closer you are to a wireless base station antenna, the lower the power output. While there may be differences between the SAR levels of various devices and at various positions, they all meet the government requirement.

## FCC statement

This device complies with FCC's radiation exposure limits set forth for an uncontrolled environment.

This device complies with Part 15 of the FCC Rules. Operation is subject to the following two conditions: (1) this device may not cause harmful interference, and (2) this device must accept any interference received, including interference that may cause undesired operation.

**Warning:** Changes or modifications to this unit not expressly approved by the party responsible for compliance could void the user's authority to operate the equipment.

**NOTE:** This equipment has been tested and found to comply with the limits for a Class B digital device, pursuant to Part 15 of the FCC Rules. These limits are designed to provide reasonable protection against harmful interference in a residential installation. This equipment generates, uses and can radiate radio frequency energy and, if not installed and used in accordance with the instructions, may cause harmful interference to radio communications. However, there is no guarantee that interference will not occur in a particular

installation. If this equipment does cause harmful interference to radio or television reception, which can be determined by turning the equipment off and on, the user is encouraged to try to correct the interference by one or more of the following measures:

- Reorient or relocate the receiving antenna.
- Increase the separation between the equipment and receiver.
- Connect the equipment into an outlet on a circuit different from that to which the receiver is connected.
- Consult the dealer or an experienced radio/TV technician for help.

The device must not be co-located or operating in conjunction with any other antenna or transmitter.

## Restricted Use of Electronic Devices

The use of electronic/electric devices may interfere with safe operation of some aircraft and can be restricted with some airline companies. Please check with your airline company before traveling.

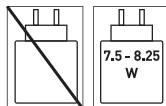
KURIO has an Airplane Mode. Please go into the Settings of the Android Interface to switch the tablet into Airplane Mode. All wireless connections will be turned off.

## Tech Support & Warranty Information

- If you have any questions setting up or using your tablet, please visit [www.kurioworld.com](http://www.kurioworld.com) to find out more about KURIO tablet, read our FAQs, and for any technical support. All of our products have a 2-year Limited Warranty. In the unlikely event you experience any problems with your KURIO please visit [www.kurioworld.com](http://www.kurioworld.com) to contact KURIO Customer Care. You may also contact Customer Care through the Customer Care/KURIO Support applications on the device. If the service representative is unable to solve the issue, he or she will provide instructions regarding how to have your KURIO serviced if it is under warranty.
- Please note that this tablet is warranted only to the original purchaser for a period of twenty-four months from the original purchase date, under normal use and service, against defective workmanship and materials. If the product is damaged due to accident, improper or unreasonable use or maintenance, such as broken screen, fall, water damage, etc., this damage is not covered by the warranty. Please still contact KURIO Customer Service for repair and replacement options, especially for a broken screen or other spare parts.
- Please visit [www.kurioworld.com](http://www.kurioworld.com) for the full details of KURIO's 2 years limited warranty.

## Information on the power supply adaptor (not included)

The power delivered by the charger must be between min 7.5 Watts required by the radio equipment, and max 8.25 Watts in order to achieve the maximum charging speed.



Power supply adaptor 5V  $\bar{\text{---}}$  1.5A

## Recycling



Waste electrical products and batteries should not be disposed of with household waste.

Please recycle where facilities exist. Check with your local authority for recycling advice.

**CAUTION – ELECTRICALLY OPERATED PRODUCT –** As with all electric products, precautions should be observed during handling and use to prevent electric shock. Rechargeable Lithium battery inside.

Adult supervision is recommended. Please retain this manual for further reference.

## Privacy Policy

We need you to provide us with your email address when activating your KURIO tablet and keep your email address up to date via the Parental Area to be informed of important updates and information. Your email address will never be shared with any third parties and you can unsubscribe at any time by clicking on the link provided at the bottom of every KURIO email. To read our Privacy Policy at any time, please go to [www.kurioworld.com](http://www.kurioworld.com).

	<b>WARNING</b> RISK OF ELECTRIC SHOCK DO NOT OPEN			The lightning flash with arrow head within a triangle is intended to tell the user that parts inside the product constitute a risk of electric shock to people.
<b>WARNING: TO REDUCE THE RISK OF ELECTRIC SHOCK DO NOT REMOVE COVER OR BACK. NO USER-SERVICEABLE PARTS INSIDE. REFER SERVICING TO QUALIFIED SERVICE PERSONNEL.</b>				The exclamation point within a triangle is intended to tell the user that important operating and servicing instructions are in the papers with the appliance.
<b>CAUTION: TO REDUCE THE RISK OF FIRE OR ELECTRIC SHOCK, DO NOT EXPOSE THIS APPARATUS TO RAIN OR MOISTURE. DO NOT PLACE ANY OBJECTS FILLED WITH LIQUIDS, SUCH AS VASES, ON THIS APPARATUS.</b>				

# Copyrights

The Bluetooth® word mark and logos are registered trademarks owned by Bluetooth SIG, Inc. and any use of such marks by Diset, S.A. is under license. Other trademarks and trade names are those of their respective owners. CronLab® is a CronLab Limited registered trademark. ©2015 Tap Tap Tales; ©Edugames Publishing LTD; ©2014 Vector Unit Inc; ©Orbital Nine. 2016; ©Magma Mobile. All right reserved; © 1st Day; ©Nordcurrent; ©Zerokcm; ©2018 ReRolled; © 2016 Kidjo, INC; ©KIDO'Z Ltd. - Empowering kids' digital life © 2012, All rights reserved. © 2023 Diset, S.A. Jumbodiset Group. KURIO® is a registered trademarks of Diset, S.A. LIL KURIOS™, the names, the graphics, the musics and brands mentioned on this product are registered trademarks of Diset, S.A.; ©PMQ software 2013–2022; © 2016 Monkimun; © 2019 Zulleon Ltd.; © 2014 Caped Koala Studio; © Webcore Games 2017; Copyright © 2016 Toon Goggles, Inc; Copyright ©2015, Twinlife. All Rights Reserved; Google, Android, Google Play, Family Link and other marks are trademarks of Google LLC. Images Shutterstock.



**WARNING! Permanent hearing loss may occur if earphones or headphones are used at high volume for prolonged periods of time.**

The content and colors of this package may vary slightly from the photographs.

For more information about KURIO, please go to [www.kurioworld.com](http://www.kurioworld.com) or contact:

**Jumbodiset**

**Diset, S.A.**  
Calle C, nº 3, Sector B, Zona  
Franca,  
08040 Barcelona  
España

**KIDZ DELIGHT, LTD.**  
1431 Opus Place Suite 110  
Downers Grove  
Illinois  
IL60515  
United States of America

Made in China  
Printed in China

© 2023 Diset, S.A.  
Jumbodiset Group.

C23100US1\_KDUS\_AW\_UM\_03\_002\_231016

