

Kurio® TAB



SETUP GUIDE

Interface

Front camera



Speakers

1 Power ON/OFF/STANDBY

2 Volume +

Back

3 Volume -

4 Microphone

Home

Recent apps

5 Micro USB/Charger

6 Headphone 3.5mm jack

Child's Menu

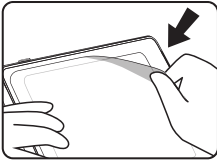
7 Micro SD card slot

IMPORTANT INFORMATION - PLEASE READ BEFORE SETTING UP YOUR KURIO

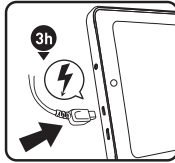
- The tablet must be set up by an adult to ensure an appropriate level of protection for all users of the device.
- To turn off your KURIO tablet correctly, press the power button until the pop up message appears on screen, and then select "Power off". Avoid switching off the device by pressing and holding the power button until the unit stops.
- Password reset: Tech support may not be able to retrieve your parental area password, so please don't forget to note it in a safe place. In case of a lost password, the tablet may have to be factory reset and all personal data will be lost.
- Please connect your KURIO tablet to wifi frequently to receive and enjoy the latest upgrades. Updates are pushed to your tablet wirelessly.
- If you encounter any issues with your device, please do not return it to the store. Please review our FAQs & troubleshooting info or contact our tech support team for help at www.kurioworld.com/support/
- Please note that part of the memory is used for the internal system and for pre-installed applications.

Find more tests and information on WWW.KURIOWORLD.COM

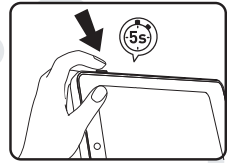
Installation & Update



Remove this film before use



Charge the tablet for three hours before first use



Press the power button for five seconds to turn the tablet on

KURIO setup

Setup all the following elements to make your child experience safer with the browser.

- **Parent setup:** Enter an email address and check the Terms and Conditions.
- **Password:** To protect your parental account, you must set up a password.

Setup your child profile

- Choose a name or a nickname for your child.
- Setup the birthdate and gender.

Touch the Child Mode Activation icon to lock your tablet in Child Mode and access Kurio Genius parental settings.



KURIO child mode interface

- **Favourites:** Press and hold the app icon, then drag & drop to the "Add to Favourites" label, which appears in the middle of the screen.
- **Kurio Selection:** Access our pre-selected apps.
- **Apps:** Access all authorised apps.
- **Child's Menu:** Touch to access the different options of the child's profile interface.
- **Avatar Menu:** Touch to choose your avatar.
- **Wallpaper Menu:** Touch to choose your wallpaper.
- **Kurio Genius:** Touch to access the main menu of our Kurio Genius parental center.



KURIO GENIUS™ Overview

The KURIO GENIUS parental app is pre-installed. It will give you quick access to the main settings and features of the KURIO system:

Main menu

From this screen, you have access to the parental account settings. You also have access to all the submenus to set specific parameters of parental control by pressing their title.

- **Child's profile information:** You can modify your child's profile name, birth date and gender at the top of the screen.
- **Application management:** To allow or block each application installed on the tablet.
- **Time control:** To configure hours of use per day, and play time.
- **Web access:** To allow, block or manage Internet access, use web filtering or web list.



Application management

- **Authorise app auto:** Turn on this option if you want automatic installation of apps on the child's profile.
- **Application management menu:** Select apps from the list to authorise or to block from the child's profile.
- **Delete applications:** You can delete applications from this screen by clicking on the icon to delete.



Time control

Thanks to the Time Control Menu, you can setup different time parameters to control your child's use of his apps. You may limit the access to his apps at specific times of the day and for a specific duration.

- **Time control menu:**
 - Hours of use: Time slot of possible use per day. Choose the time slot by dragging the cursors to define the hours within which the child will be able to access the apps.
 - Playtime: Maximum duration of use per day.

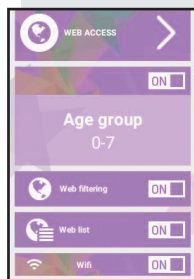
You can do this for the whole week but also set different settings for specific days using the tabs at the top of the screen.



Web access

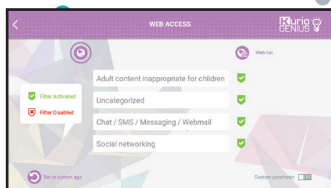
Our advanced filtering system allows children to access thousands of websites safely, by blocking websites that may contain inappropriate content.

- Turn off web access from the KURIO GENIUS main menu to block all access to the web.
- Turn on web filtering to predefined filters for websites according to the age of your child. (Press the web access title to access more options).
- Turn on the web list to use your personalised list of websites. (Press the web access title to access more options).
- Turn On the wifi to use it.



Web access menu

- **Web filtering:** Use the automatic web filtering list adjusted to your child's age by default or turn on the custom parameters to disable or activate the filter on specific categories of your choice. You can press "Set to current age" at any time to reset the list to default.
- **Web list:** Create and manage a list of websites by adding URLs to allow or to block. The green tick shows the web site is authorised, while the red cross means the web site is blocked.



KURIO Connect*

KURIO Connect allows the Parent to connect to the KURIO tablet remotely:

- **Send messages & Emojis**
 - **Talk* to the child through the tablet**
- *Only available for Android Smart devices.

Prerequisites

Download the KURIO Connect App from Google Playstore on the Parent's device.

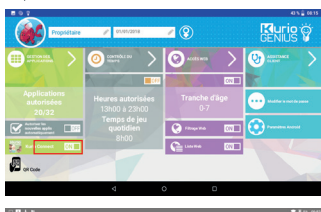
Make sure both KURIO Tablet and the Parent's device (Smartphone or Tablet) are connected to the Wifi network.

1st pairing

- Open Kurio Genius™ menu from the Parent profile on the KURIO Tablet. Turn ON Kurio Connect app. Once Kurio Connect app is ON, below will appear a QR code icon. Click on this icon to display the QR code.
- Open the KURIO Connect App from the Parent's mobile device. Accept the terms of use, enter a name, choose an avatar and click on next. Please accept all of the requested authorisations.
- The App will launch the QR code scanner. Scan the QR code displayed on the KURIO Tablet. When scanned correctly, a 4-digit security code will appear on the tablet.
- Enter the code on the KURIO Connect App and confirm. Both devices are now paired.
- The parent can choose a connected profile and start interacting with the KURIO Tablet.

For more details, please go to www.kurioworld.com

* KURIO Connect features are available on some specific KURIO Tab models only. If you cannot find the corresponding icon in the Apps menu, unfortunately those features are not supported on your tablet model.



Scan the QR code with the application on your remote android device.
Go to Settings, then Pairing to Tablet to scan the QR Code.

Using the micro SD card

Micro SD cards can be used in 2 ways:

- **Portable storage:** micro SD card is used for file transfer such as videos, music and photos from one device to another. You may remove the card from the tablet if needed.
- **Internal storage:** if you choose this option, your micro SD card will become an internal storage for the tablet. So you can install apps to it and save app data to it.

Caution: If you use micro SD card as internal storage, the Android system will format it in a way it won't be recognised by other devices. The micro SD card shall not be removed from the device.

In some cases, when you remove the micro SD card, the device may not work properly. To fix this, please insert the micro SD card back again.

When choosing the option "Use as internal storage", the system will ask you if you want to move data to new storage.

For more details about using the micro SD card as internal storage, please check our FAQ on the website.

Tips and Recommendations

- While using some applications that use a lot of the device's processing capacity, the device may become warm. If this occurs, take a short break from using the device to let it cool down.
- Keep the unit clean by wiping it with a slightly damp cloth.
- If you encounter any charging issues, such as not fully charging or shutting off when it has a charge above 5%, you may need to reset the battery level indicator. Plug the unit into the power adapter, and then press and hold the POWER button until the tablet turns off. Continue to hold down the POWER button until the battery icon shows up again. Once it appears, release the POWER button and press it again to start the unit normally.
- The KURIO bumper protects your tablet in most cases, but is only intended to make the product more resistant to damage due to falls, bumps or other impact damages. Like any other electronic device, KURIO is fragile and despite the presence of the protective bumper, can break or be damaged from forces like dropping, banging, or being hit by other things. Please handle with care. Broken screens and touch panels are not covered by the warranty, and no bumper can prevent all damage.
- Do not damage or deform the power supply USB cord. If it is damaged or deformed, it may cause electric shock or malfunction when used. When removing from wall outlet, be sure to remove by holding the plug attachment and not by pulling the cord.
- The power adapter & cord should be plugged in near the unit, so it is easily accessible and does not strain the cord.

Warning

- All packing materials such as internal bags, plastic collars, plastic films, screen protector film, and carton inserts are not part of this product and should be removed before handing the device over to a child. Please keep the box and this guide for further reference.
- Do not try to disassemble the unit.
- To charge KURIO, only use the power adapter supplied with your tablet.
- Keep the unit out of direct sunlight and away from any direct heat source.
- Do not expose the unit to moisture or water.
- If a small part is coming out of the KURIO, don't try to remove it. Keep it away from small children.
- Never force a connector into a port of KURIO. If a connector and a port do not join with reasonable force, make sure that the connector matches the port and that you have positioned the connector correctly in relation to the port.
- To clean up the screen, simply use a soft damp cloth. Do not use alcohol, solvent, aerosol spray or abrasive cleaners to clean your KURIO.
- The silicone bumper is designed to protect from light use and drops, but is not guaranteed to protect this delicate piece of electronics from severe drops, abuse, misuse, etc.
- The product and micro USB cable should be periodically examined to check that they are in good condition. In case of defect, the micro USB cable should not be repaired but replaced.
- MicroSD card: You can also share data using a microSD card sold separately. Make sure to move the files to and from the appropriate folders so that they can appear properly on your tablet. We recommend that you transfer your photos and videos regularly.
- In case of data transfer from your Tablet to PC or MAC, to avoid data corruption or lost data, follow the instructions in this manual. The user is responsible for any damage or loss of data, the misuse, malfunction or modification.
- If for any reason, the screen [display] is cracked or broken, immediately stop using the product.
- Do not drop the product or subject it to severe impact.
- Do not use and do not expose the device in extreme temperatures (hot or cold), dusty conditions or damp conditions. Do not expose to direct sunlight. Do not expose the device to water, liquids, rain, dust or moisture. If your tablet is exposed to liquid, power off the device immediately and clean/dry it.
- Avoid using the device near strong magnetic fields. If your tablet has been exposed to magnetic fields, please restart the device, following the instructions in this manual, if necessary.
- Please keep the box and this manual for further reference. This manual may not reflect your actual device's operation. All information is subject to change without prior modification. Please follow your actual device's operational procedures.

Tech Support & Warranty Information

- If you have any questions setting up or using your tablet, please visit www.kurioworld.com to find out more about Kurio®, read our FAQs, and for any technical support. All of our products have a 1 Year Limited Warranty. In the unlikely event you experience any problems with your Kurio®, please visit www.kurioworld.com/support/ to contact Kurio® Customer Care. You may also contact Customer Care through the Customer Care/Kurio Support applications on the device. If the service representative is unable to solve the issue, he or she will provide instructions regarding how to have your Kurio serviced if it is under warranty.
- Please note that this tablet is warranted only to the original purchaser for a period of twelve months from the original purchase date, under normal use and service, against defective workmanship and materials. If the product is damaged due to accident, improper or unreasonable use or maintenance, such as a broken screen, fall, water damage, etc., this damage is not covered by the warranty. Please still contact Kurio® Customer Service for repair & replacement options, especially for a broken screen or other spare parts.
- Please visit www.kurioworld.com for the full details of Kurio®'s 1 Year Limited Warranty.

The use of electronic/electric devices may interfere with safe operation of some aircraft and can be restricted with some airline companies. Please check with your airline company before traveling.

KURIO has an Airplane Mode. Please go into the Settings of the Android Interface to switch the tablet into Airplane Mode. All wireless connections will be turned off.

EU Declaration of conformity

Hereby, "CATALANA de INVESTIGACION y DESARROLLO de ELECTRONICA INTERACTIVE S.L.U" declares that the radio equipment type 01618, 01516 is in compliance with Directive 2014/53/EU. The full text of the EU declaration of conformity is available at the following internet address :

For KURIO Tab Connect: http://kurioworld.com/download/01618_CE.pdf

Recycling







Waste electrical products and batteries should not be disposed of with household waste. Please recycle where facilities exist. Check with your local authority for recycling advice.

CAUTION – ELECTRICALLY OPERATED PRODUCT –
As with all electric products, precautions should be observed during handling and use to prevent electric shock. Rechargeable Lithium battery inside. Adult supervision is recommended. Please retain this manual for further reference.

Privacy Policy

We need you to provide us with your email address when activating your KURIO tablet and keep your email address up to date via the Parental Area to be informed of important updates and information. Your email address will never be shared with any third parties and you can unsubscribe at any time by clicking on the link provided at the bottom of every KURIO email. To read our Privacy Policy at any time, please go to www.kurioworld.com.

 WARNING RISK OF ELECTRIC SHOCK DO NOT OPEN		 <p>The lightning flash with arrow head within a triangle is intended to tell the user that parts inside the product constitute a risk of electric shock to people.</p>
WARNING: TO REDUCE THE RISK OF ELECTRIC SHOCK DO NOT REMOVE COVER OR BACK. NO USER-SERVICEABLE PARTS INSIDE. REFER SERVICING TO QUALIFIED SERVICE PERSONNEL.		 <p>The exclamation point within a triangle is intended to tell the user that important operating and servicing instructions are in the papers with the appliance.</p>
CAUTION: TO REDUCE THE RISK OF FIRE OR ELECTRIC SHOCK, DO NOT EXPOSE THIS APPARATUS TO RAIN OR MOISTURE. DO NOT PLACE ANY OBJECTS FILLED WITH LIQUIDS, SUCH AS VASES, ON THIS APPARATUS.		

Copyrights

©2018 KURIO® and KD Interactive are registered trademarks of CIDE Interactive SLU. Android, Google Play, YouTube and other marks are trademarks of Google LLC; Oreo is a trademark of Mondelez International, Inc. The Android robot is reproduced or modified from work created and shared by Google and used according to terms described in the Creative Commons 3.0 Attribution License. © 2013 Sybo and Kilo, All rights reserved. © 2014 Vector Unit Inc © 2015 Caped Koala Studios © 2016 Allancode Inc. © 2016 Breakfirst © 2016 Kidjo, INC © 2016 Maily All rights reserved © 2016 Monkimun © 2016 Orbital Nine © 2016 Pokémon. © 1995 – 2016 Nintendo/Creatures Inc./GAME FREAK inc. TM, ®, and character names are trademarks of Nintendo. © 2016 Tap Tap Tales S.L. © 2016 TapTapTales © 2016 Witty Wings © 2017 batteryPOP LLC © 2017 KidsCast © Animoca Brands © Bilingual Children's Enterprises, Inc. © Frima Studio Inc. © KD Productions Toons and Games © Magma Mobile. All right reserved © Paul Salame © PMQ software 2013–2016 Copyright © 2016 Toon Goggles, Inc Copyright © 2013-2017 KD Productions™. All rights reserved. KD GROUP™, KD™, KD INTERACTIVE™, KURIO™, KD PRODUCTIONS™, the KD™ logo, the names, the graphics, the musics and brands mentioned on this product are registered trademarks of KD GROUP™. Copyright © 2015 GivingTales Kft. All rights reserved. Copyright ©2015, Twinlife. All Rights Reserved CronLab® is a CronLab Limited registered trademark KID0Z Ltd. - Empowering kids' digital life © 2012, All rights reserved. MicroSDHC Logo is a trademark of SD-3C, LLC. The Bluetooth® word mark and logos are registered trademarks owned by Bluetooth SIG, Inc. and any use of such marks by CIDE Interactive is under license. Other trademarks and trade names are those of their respective owners. © 2018 ZepLab UK Limited
The content and colours of this package may vary slightly from the photographs.



Warning! Permanent hearing loss may occur if earphones or headphones are used at high volume for prolonged periods of time.

For more information about KURIO, please go to www.kurioworld.com or contact:



Imported by:

CIDE SLU
Catalunya 83 – 85, Planta 1
Viladecans Business Park, Edificio Brasil
08840 Viladecans (Barcelona)
SPAIN

Made in China
Printed in China
CJB1N4101AAA



C18170_171_GB_KDGB_AW_UM_01_005_190716
©2019 CIDE Interactive SLU